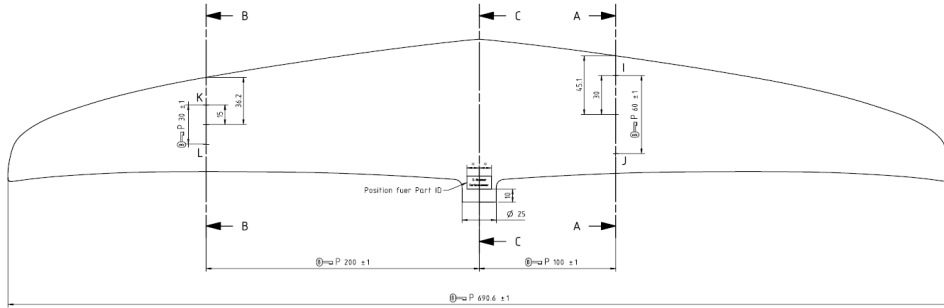
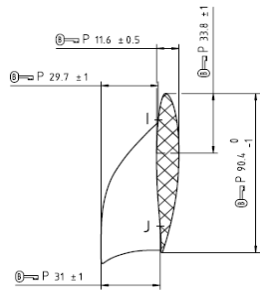


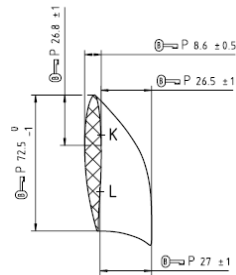
Brand: Levitaz
Model: Frontwing R5-S



Schnitt / Section A-A



Schnitt / Section B-B



G448511ugd001_c

Measurement Date
Order Number
Worker
Serial No.
Mold Number
Status

Registered IKA Tolerance IKA Min IKA Max

| | | | |
|--|------------------|--------|--------|
| Weight Frontwing [g] | 590 +/- 5,0 % | 560,5 | 619,5 |
| Weight Frontwing incl. Steel Box [g] | 1270 +/- 5,0 % | 1206,5 | 1333,5 |
| Frontwing a (max span) in mm | 690,6 +/- 1,0 mm | 689,6 | 691,6 |
| Frontwing c (chord AA) in mm | 90,4 - 1,0 mm | 89,4 | 90,4 |
| Frontwing d (max profile A-A) in mm | 11,6 +/- 0,5 mm | 11,1 | 12,1 |
| Frontwing e (profile depth AA) in mm | 26,8 +/- 1,0 mm | 25,8 | 27,8 |
| Frontwing f (chord B-B) in mm | 72,5 - 1,0 mm | 71,5 | 72,5 |
| Frontwing g (max profile B-B) in mm | 8,6 +/- 0,5 mm | 8,1 | 9,1 |
| Frontwing h (profile depth B-B) in mm | 33,8 +/- 1,0 mm | 32,8 | 34,8 |
| Frontwing i (wing height A-A) in mm | 27 +/- 1,0 mm | 26 | 28 |
| Frontwing j (wing height A-A) in mm | 26,5 +/- 1,0 mm | 25,5 | 27,5 |
| Frontwing k (leading edge) in mm | 31 +/- 1,0 mm | 30 | 32 |
| Frontwing l (trailing edge) in mm | 29,7 +/- 1,0 mm | 28,7 | 30,7 |